

# Briare / Sully-sur-Loire

## La Scandibérique / EuroVelo 3

---

□

**Départ**

Briare

**Arrivée**

Sully-sur-Loire

**Durée**

2 h 42 min

**Distance**

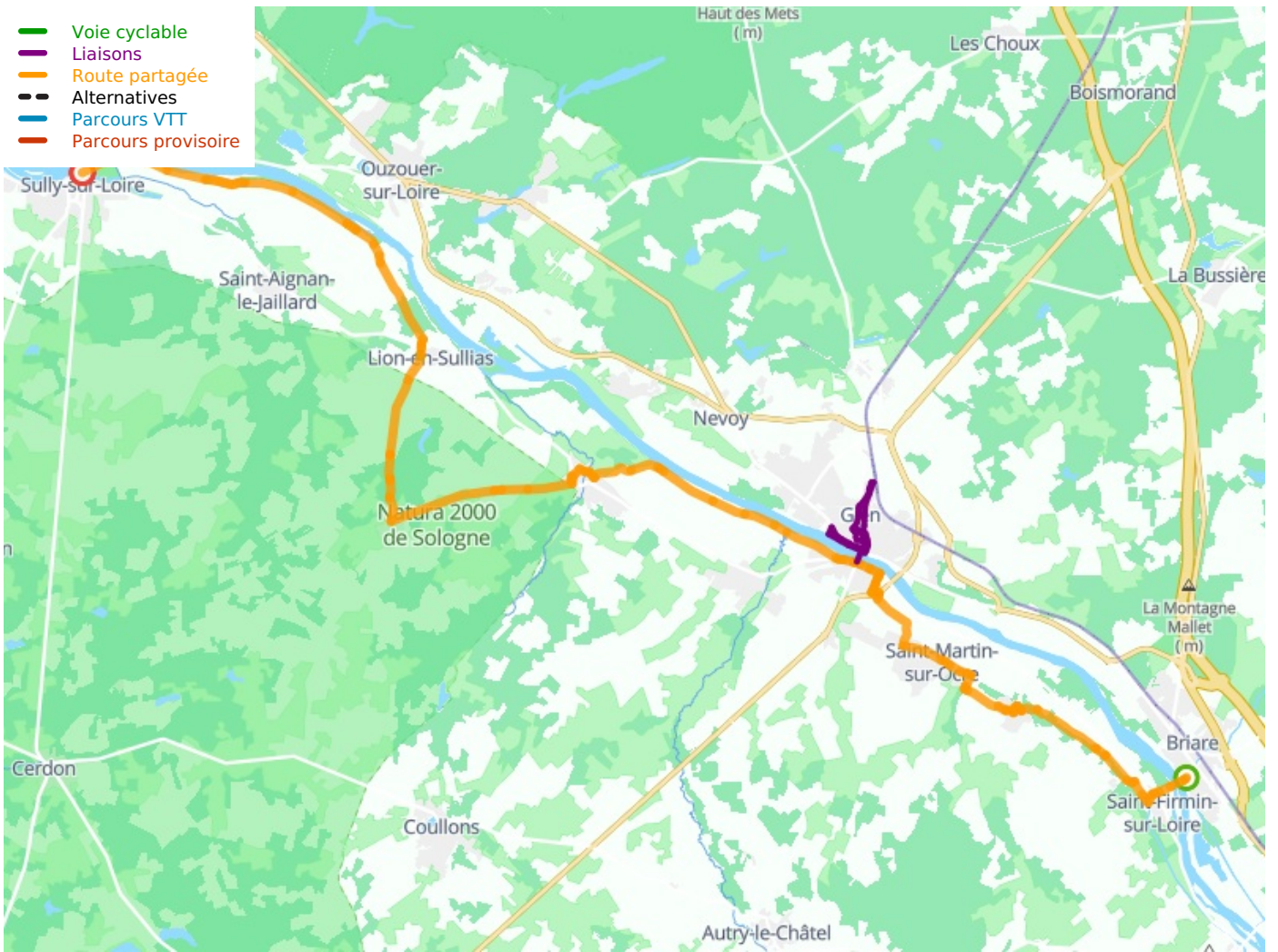
40,60 Km

**Niveau**

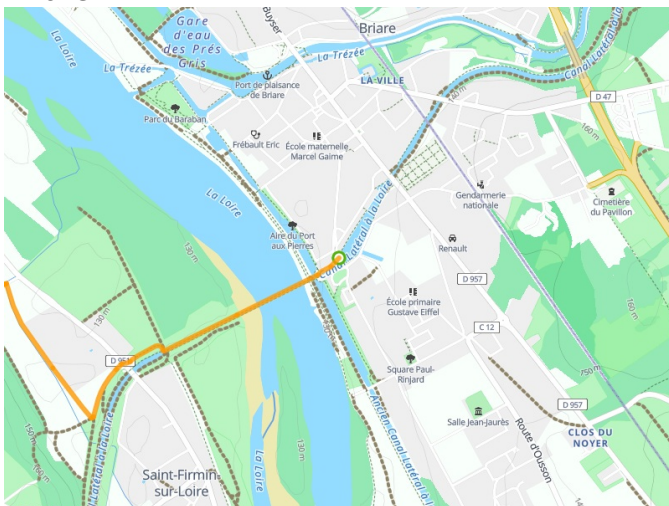
Ik ben beginner / met  
het gezin

**Thématique**

langs kanalen en  
rivieren



**Départ Briare**



**Arrivée Sully-sur-Loire**

